

MARKETING MATERIALS & CONTINUING EDUCATION TO ASSIST IN WHITENING YOUR PATIENTS.

COMPLIMENTARY MARKETING MATERIAL



POSTER POLA DAY
Reorder M100274



POSTER POLA NIGHT
Reorder M100275



POSTER POLA LIGHT
Reorder M100486



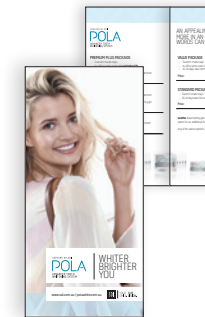
POLA PATIENT HANDOUT STAND
Reorder M100290



POLA PATIENT HANDOUTS
Reorder M100367



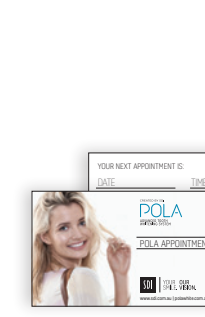
POLA LIGHT COUNTER CARD
Reorder M100496



POLA MENU
Reorder M100292



POLA STATEMENT STUFFER
Reorder M100291



POLA APPOINTMENT CARDS
Reorder M100287



POLA WINDOW STICKER
Reorder M100289



POLA CEILING TILE
Reorder M100293



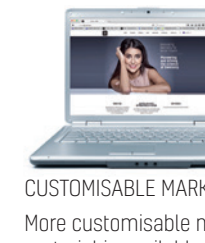
POLA THANK YOU CARD
Reorder M100295



POLA CARRY BAG
Reorder M100143



POLA WAITING ROOM USB VIDEO
Reorder M100245



CUSTOMISABLE MARKETING MATERIAL
More customisable marketing material is available via download. Visit www.sdi.com.au

CEMENTS

SET

- DUAL CURE, SELF ADHERING RESIN CEMENT
- No Bis-Phenol A or HEMA
 - High bond strength
 - Easy clean up
 - Box of 50 capsules



SET PP

- DUAL CURE, SELF ADHERING RESIN CEMENT
- No Bis-Phenol A or HEMA
 - No need to etch - minimizes post operative sensitivity
 - Easy to clean up
 - 7g syringe refills and kits



RIVA LUTING

- SELF CURING CONVENTIONAL GLASS IONOMER LUTING CEMENT
- Great for PFM crowns, metal posts, orthodontic bands, implants
 - BPA & HEMA free
 - Very low film thickness - flows easily between restoration and tooth



RIVA LUTING PLUS

- SELF CURING RESIN MODIFIED GLASS IONOMER LUTING CEMENT
- Chemically adheres to tooth and substrates
 - BPA free
 - High bond strengths
 - High fluoride releasing and recharging ability



VISIT WWW.SDI.COM.AU

SDI YOUR. OUR SMILE. VISION.

AUSTRALIA 1 800 337 003
AUSTRIA 0800 0225 5734
BRAZIL 0800 770 1735
FRANCE 0800 0225 5734
GERMANY 0800 100 5759

ITALY 0800 0225 5734
NEW ZEALAND 0800 808 855
SPAIN 0800 0225 5734
UNITED KINGDOM 0800 0225 5734
USA & CANADA 1 800 228 5166



PRODUCT OVERVIEW

- AMALGAMS
- TOOTH WHITENING
- ACCESSORIES
- GLASS IONOMERS
- LED CURING LIGHTS
- COMPOSITES
- EQUIPMENT
- CEMENTS
- ADHESIVES
- ETCHANTS
- SEALANTS
- SDF RIVA STAR

CREATED BY SDI
POLA
ADVANCED TOOTH WHITENING SYSTEMS.

TOOTH WHITENING

POLA DAY

- HYDROGEN PEROXIDE BASED TAKE HOME ADVANCED TOOTH WHITENING SYSTEM
- From 30 minutes once a day
 - Available in 7.5% and 9.5% hydrogen peroxide



POLA NIGHT

- CARBAMIDE PEROXIDE BASED TAKE HOME ADVANCED TOOTH WHITENING SYSTEM
- From 45 minutes once a day
 - Available in 10%, 16% and 22% carbamide peroxide



POLA DAY CP

- GREAT RESULTS IN ONLY 15 MINUTES A DAY!
- 35% carbamide peroxide
 - Contains: fluoride & desensitizing additives
 - 2 packaging choices: 4 or 50 syringe kit



POLA LIGHT

- ADVANCED TAKE HOME TOOTH WHITENING SYSTEM WITH LED TECHNOLOGY
- No chair time or custom trays required
 - Formulated to safely remove long term stains
 - LED mouthpiece is a dual arch and universal size
 - Portable, rechargeable and easy to wear
 - 2 x 10 or 2 x 15 minute treatments a day



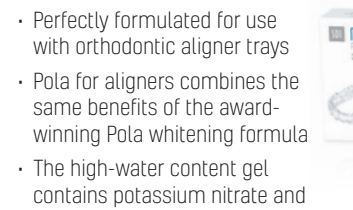
POLA LUMINATE

- BRUSH ON & GO!
- 6% hydrogen peroxide, low viscosity fast drying gel
 - Apply twice a day for just 30 minutes



POLA FOR ALIGNERS

- STRAIGHTEN AND BRIGHTEN TOGETHER
- Perfectly formulated for use with orthodontic aligner trays
 - Pola for aligners combines the same benefits of the award-winning Pola whitening formula
 - The high-water content gel contains potassium nitrate and fluoride to reduce sensitivity



POLA RAPID

- IN-OFFICE TOOTH WHITENING SYSTEM. SUPER. FAST. WHITENING.
- 38% hydrogen peroxide
 - Fast: from 3 x 8 minute applications
 - Non-stick gel for faster application and removal
 - Enhanced blue colour for superior visibility



WHITER. BRIGHTER. YOU.

SDI YOUR. OUR SMILE. VISION.

www.sdi.com.au
www.polawhite.com.au

THE
REVOLUTIONARY
GIC SYSTEM.

GLASS IONOMERS

RIVA SELF CURE

- SELF-CURING, TOOTH REMINERALIZING GLASS HYBRID BULK FILL RESTORATIVE
- Contains SDI's proprietary ionglass™, a high ion releasing, radiopaque, bioactive glass that remineralizes and prevents secondary caries formation
 - Very high fluoride releasing and recharging ability
 - Easy Activation Capsule - 70% easier to activate

RIVA SELF CURE HV

- HIGH VISCOSITY, SELF-CURING, TOOTH REMINERALIZING GLASS IONOMER RESTORATIVE MATERIAL
- High Viscosity formulation is flowable enough to inject and highly sculptable and packable
 - Easy Activation Capsule - 70% easier to activate
 - Strong dentin replacement

RIVA SILVER

- MERCURY FREE SELF-CURING GLASS IONOMER RESTORATIVE MATERIAL
- Silver reinforced
 - Ideal for abfraction lesion restorations
 - Ideal for bulk filling
 - High fluoride releasing and recharging ability

RIVA APPLICATOR 2

- Allows more material to extrude from the capsules
- Autoclavable - easy to clean
- Fits comfortably in smaller hands
- Robust & long lasting

RIVA STAR

- TOOTH DENSITIZING AGENT
- Desensitizer for cervical tooth hypersensitivity
 - Enhances bond strength of self-curing glass ionomers



RIVA LIGHT CURE

- LIGHT CURED, RESIN REINFORCED GLASS IONOMER RESTORATIVE MATERIAL
- Contains SDI's proprietary ionglass™, a high ion releasing, radiopaque, bioactive glass that remineralizes and fights against secondary caries formation
 - Exceptional handling - available in both regular and high viscosity

RIVA LIGHT CURE HV

- HIGH VISCOSITY, LIGHT CURED, RESIN REINFORCED GLASS IONOMER RESTORATIVE MATERIAL
- Unique, patented, orange light safe tip, prevents curing in the tip and significantly extends working time
 - Easy Activation Capsule - 70% easier to activate

RIVA PROTECT

- SELF CURING CONVENTIONAL GLASS IONOMER USED AS A SEALANT, LINER AND SURFACE PROTECTOR
- Works in a moist environment - indicated for partially erupted teeth and challenging patients



RIVA STAR AQUA

- TOOTH DENSITIZING AGENT
- Instant desensitizer (for 2 years+)
 - AgF solution. Same clinical efficacy as SDF
 - Assists in the elimination of biofilm
 - Increases bond strength of self-curing glass ionomers
 - No soft tissue irritation



COMPOSITES & SEALANTS

LUNA 2

- UNIVERSAL COMPOSITE
- Improved non-stick, non-slump handling and reliable mechanical properties
 - Logical Shade Matching Technology for easier and accurate shade selection
 - BPA free
 - Very high radiopacity of 250% Al



LUNA FLOW AND LUNA FLOW LV

- UNIVERSAL FLOWABLE COMPOSITE
- Exceptionally high compressive strength of 421 MPa and 128 MPa of flexural strength
 - Flows on demand, holds its shape and does not string for maximum control over application
 - Outstanding radiopacity of 265% Al for faster and more precise diagnosis
 - Logical Shade Matching Technology for easier and accurate shade selection
 - Two viscosity options for all clinical indications: Luna Flow offers medium/high viscosity and Luna Flow LV offers low viscosity



AURA

- ULTRA AESTHETIC UNIVERSAL COMPOSITE
- 8 dentin shades and 3 enamel shades to reproduce the natural colors of teeth
 - A simple layering technique with zero guesswork
 - High polishability and gloss
 - Non-stick and easy to sculpt
 - Ultra High Density (UHD) filler with low-shrinkage resin
 - High flexural strength



AURA EASY

- 4 SHADES = SIMPLE, BRILLIANT RESTORATIONS, EVERY TIME!
- 4 shades cover 16 VITA® classical A1-D4® shades
 - Increased wear resistance and strength
 - Smooth high gloss finish every time
 - Non-sticky consistency makes it simple to sculpt
 - Low volumetric shrinkage to offset marginal stress
 - 4 universal shades to minimize inventory
 - No slumping and holds its shape
 - Available in syringes and complets



AURA BULK FILL

- ONE SHADE, ONE FILL
- High compressive & wear strength - no need for capping layer
 - 5mm depth of cure
 - Excellent aesthetics due to novel curing feature & chameleon effect
 - Low shrinkage
 - Quick & easy to place without sticking or slumping



WAVE, WAVE MV AND WAVE HV

- FLUORIDE RELEASING, FLOWABLE RADIOPAQUE COMPOSITES
- High compressive strength
 - Nano technology
 - Three viscosities



AURA EASYFLOW

- SMART FEATURES FOR EVERY LAYER OF USE
- Established nanohybrid filler system
 - Optimal flow for cavity adaptation
 - High visibility on radiographs
 - Strong mechanical properties
 - Easy shade matching
 - Optimized optical properties
 - Stable esthetics over time



CONSEAL F

- LIGHT CURED FLUORIDE RELEASING RESIN PIT AND FISSURE SEALANT
- No Bis-Phenol A or its derivatives
 - Accurate and controlled delivery with 27 gauge tips
 - Extremely low viscosity - quickly and deeply penetrate pits and fissures



ADHESIVES & ACCESSORIES

RIVA BOND LC

- THE FIRST ADHESIVE TO COUNTER COMPOSITE SHRINKAGE STRESS
- Unique Stress Reduction Technology™
 - Compensates and absorbs composite shrinkage stress



STAE

- 5TH GENERATION TOTAL ETCH - FLUORIDE RELEASING, DENTIN/ ENAMEL ADHESIVE
- High bond strength
 - No Bis-Phenol A or its derivatives
 - Easy to use - bonds to moist and dry tooth surfaces



RIVA CONDITIONER

- POLYACRYLIC ACID CONDITIONER
- Partially removes the smear layer
 - Optimizes adhesion of the GIC
 - 26% polyacrylic acid
 - 10mL bottle



POINTS & DISPENSER

- DISPOSABLE BRUSH APPLICATORS
- Solvent resistant, non-absorbent, non-linting fibers
 - Soft, flexible material - bendable brush applicators that retain their bent angle

- Dispenser:
- Simple turn dispensing
 - Economically priced



ZIPBOND

- Consistent bond strengths to dentin and enamel
- Wet and dry dentin bonding
- Proprietary combination of adhesive monomers including MDP
- Predictable bond strengths to indirect substrates



GO!

- 7TH GENERATION ONE STEP, ONE BOTTLE, SELF ETCHING LIGHT CURED ADHESIVE SYSTEM
- No Bis-Phenol A or its derivatives
 - Etch, prime and bond in only 35 seconds



RIVA COAT

- LIGHT CURED COATING MATERIAL FOR GLASS IONOMER AND RESIN PRODUCTS
- Prevents saliva and water contamination to exposed surfaces of glass ionomer cements during the first 24 hours immediately after placement
 - 5mL bottle



SUPER ETCH

- 37% PHOSPHORIC ACID ETCH GEL
- No interference with adhesive
 - High viscosity gel
 - Thixotropic gel which flows under direction, not gravity



AN ADHESIVE FOR EVERY INDICATION.



AMALGAMS & EQUIPMENT

RADII-CAL CX

- COLLIMATED LED CURING LIGHT
- Pulse technology = High intensity 1200mW/cm² plus low heat emission
 - Battery life = 1200 x 10 second cures
 - Advanced heat sink technology - no fan required
 - 2 year limited warranty*



NEW

*Radi-Cal CX 2 year manufacturing warranty on parts and battery.

RADII-CAL

- POWERFUL LED CURING LIGHT
- Pulse technology = High intensity 1200mW/cm² plus low heat emission
 - Stays charged for 3h 20 min = 1200 ten second cures
 - 2 year limited warranty*



*Radi-Cal 2 year manufacturing warranty on parts and battery.

ULTRAMAT 2

- HIGH SPEED MULTI-USE TRITURATOR
- 5 year limited warranty
 - Quiet, low vibration
 - Accurate and consistent trituration



RADII XPERT

- SMARTER DESIGN, OPTIMAL CURE EVERY TIME
- Unique target assist for precision curing
 - Optimally collimated beam
 - Consistent light intensity over clinically relevant distances
 - 3 year limited warranty*



2021 REALITY DENTAL ADVISOR *****

Radii Xpert LED curing light has a 3 year warranty. Battery has a 2 year warranty.

PERMITE⁺

- HIGH SILVER NON-GAMMA 2 ADMIX ALLOY
- Zero microleakage
 - Very high early compressive strength
 - Not affected by moisture



LED RADIOMETER X

- MONITOR FOR CURING LIGHT INTEGRITY
- Measures the intensity of curing lights between 400 and 525 nanometers
 - Immediate digital reading



NEW

GS-80⁺

- ECONOMICAL NON-GAMMA 2 ADMIX ALLOY
- High early compressive strength
 - Very low microleakage
 - Optimal handling characteristics



LOJIC⁺

- PLATINUM MODIFIED, HIGH SILVER, HIGH STRENGTH, SPHERICAL AMALGAM
- High early compressive strength
 - Very low microleakage
 - Superior handling characteristics



HIGH POWERED LED CURING LIGHTS.

AMALGAM CAPSULES AVAILABLE IN BOXES OF 50 OR JARS OF 500 CAPSULES

*WARNING: This product can expose you to mercury, which is known to the State of California to cause birth defects or other reproductive harm. For more information go to www.P65Warnings.ca.gov.

RIVA PRODUCTS ARE AVAILABLE IN BOXES OF 50 CAPSULES OR POWDER / LIQUID KITS

